



Soneva Secret

2024

INSPIRING A LIFETIME OF RARE EXPERIENCES





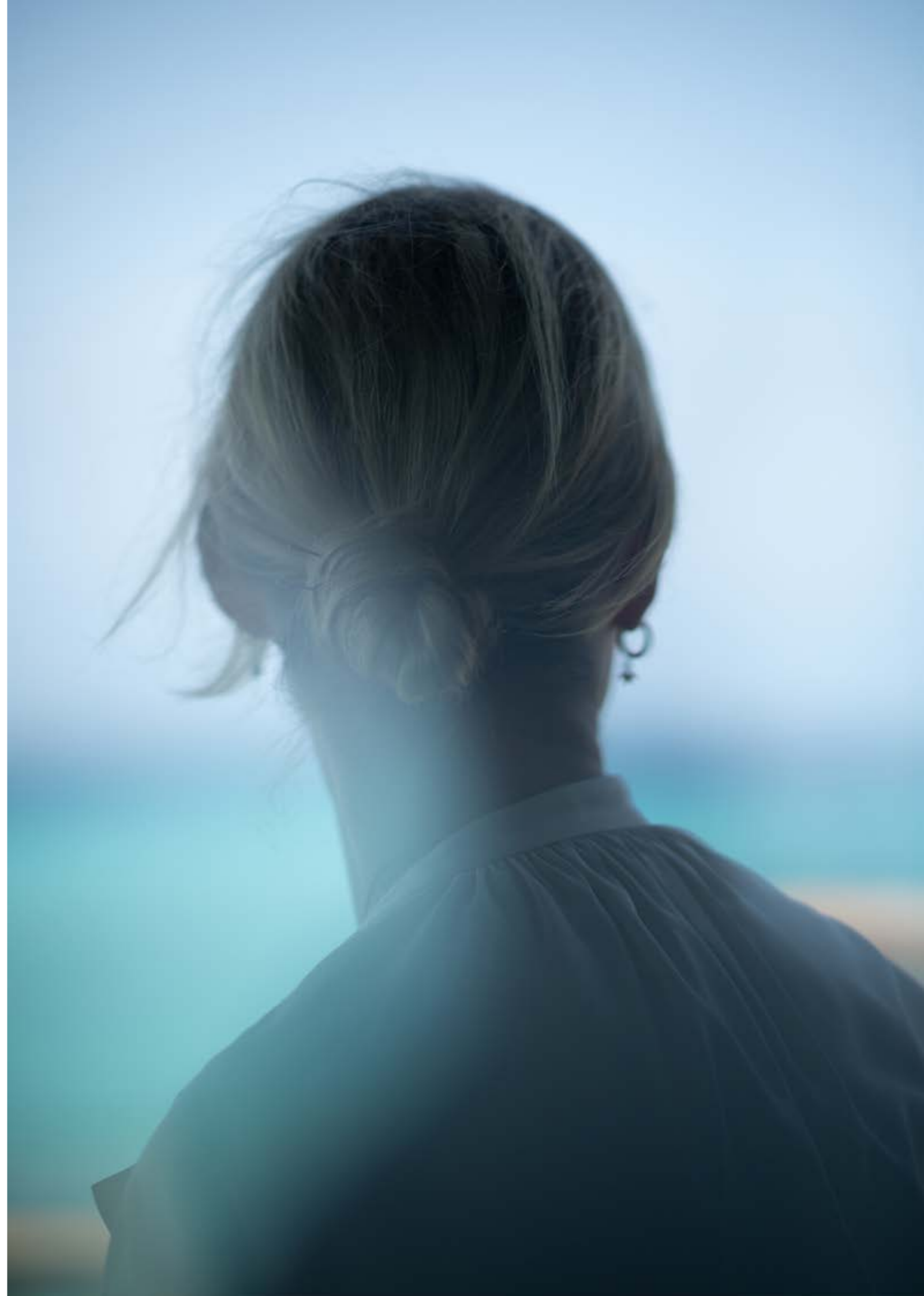
HAA DHAALU ATOLL
MALDIVES



Beautifully Bespoke

The debut Soneva Secret 2024 resort, located in the sparkling waters of Dhipparufushi in the Maldives' Haa Dhaalu Atoll, represents a new wave of rare, personalised hospitality. Thirty years in the making, it creates a blueprint for the Soneva Secret concept, crafting every stay around highly intuitive service, rare experiences and exceptional culinary journeys. With just 14 expansive villas, the remote island setting offers the ultimate in privacy and seclusion, where the beauty of nature abounds.

SONEVA SECRET



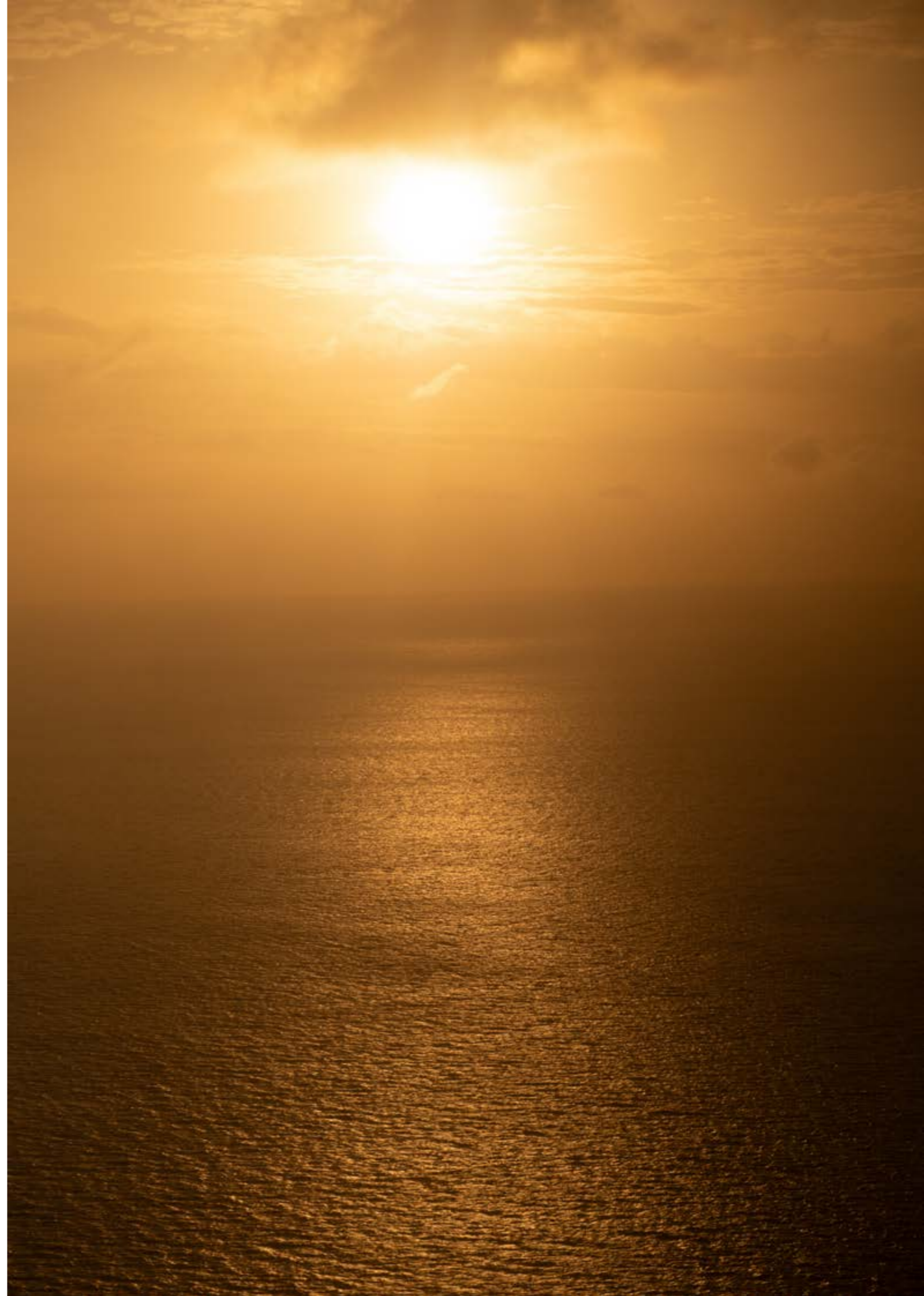
AZURE WAVES EMBRACE,
JEWEL ISLAND IN THE SEA,
NATURE'S GRACE DISPLAYED.





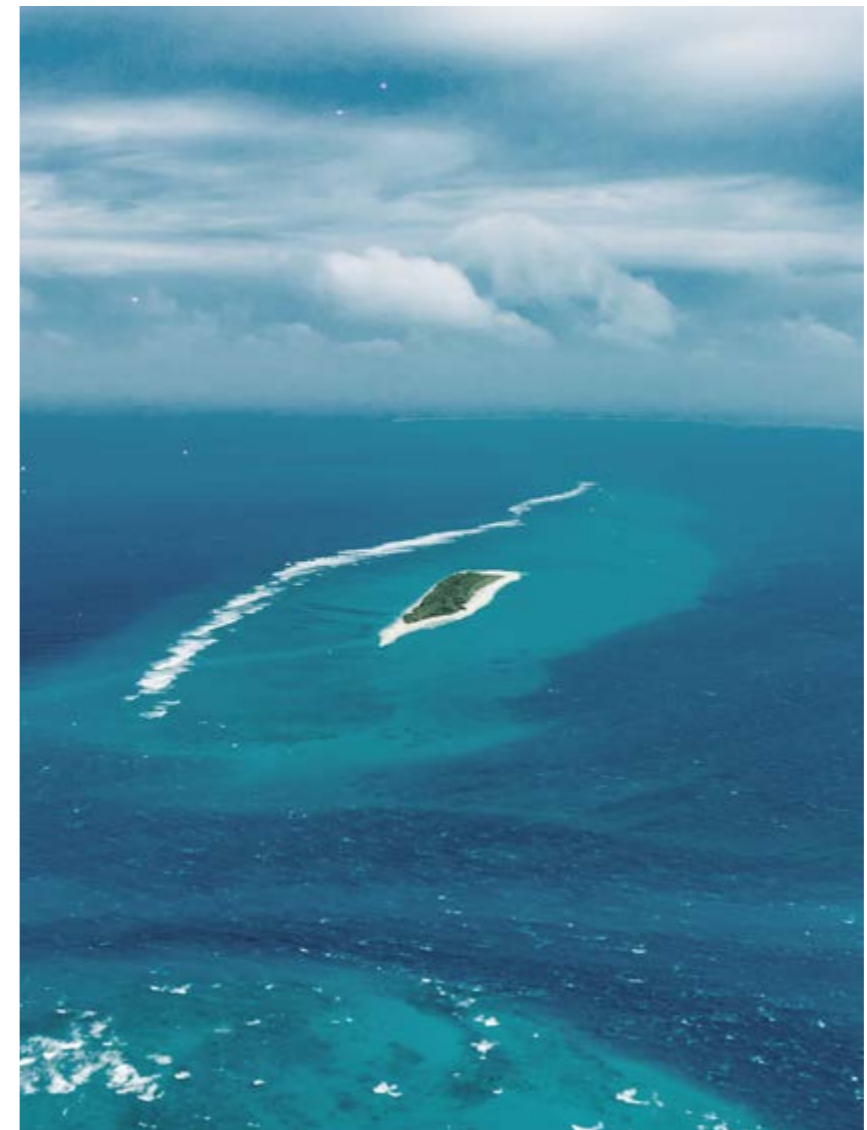
Location

Soneva Secret is the only resort in the Haa Dhaalu Atoll, and is found on the remote island of Dhipparufushi at the westernmost tip of the Maldives. Soneva Secret 2024 can be reached via a scenic 75-minute seaplane flight from Velana International Airport in Malé, a 40-minute seaplane flight from Soneva Fushi in the Baa Atoll, a 30-minute seaplane flight from Soneva Jani in the Noonu Atoll, or a leisurely full-day cruise from both Soneva Fushi and Soneva Jani onboard Soneva in Aqua. Guests can also fly directly to Maafaru International Airport in the Noonu Atoll, which operates 24/7 and handles domestic and international flights and private charters, and is located a 25-minute seaplane flight from Soneva Secret 2024. Alternatively, guests can fly to Kulhudhuffushi Airport in the Haa Dhaalu Atoll and take a one-hour speedboat ride to the resort.





EMERALD SHORES GLEAM,
WHISPERS OF PARADISE FOUND,
VIVID ISLAND DREAMS.



A photograph of a wooden interior, possibly a cabin or a small room. The walls are made of light-colored wood with a vertical grain. A window is visible in the center, showing a bright blue sky and a white structure outside. White fabric is draped over the walls and ceiling, creating a soft, ethereal atmosphere. The lighting is soft and natural, coming from the window.

So

Private



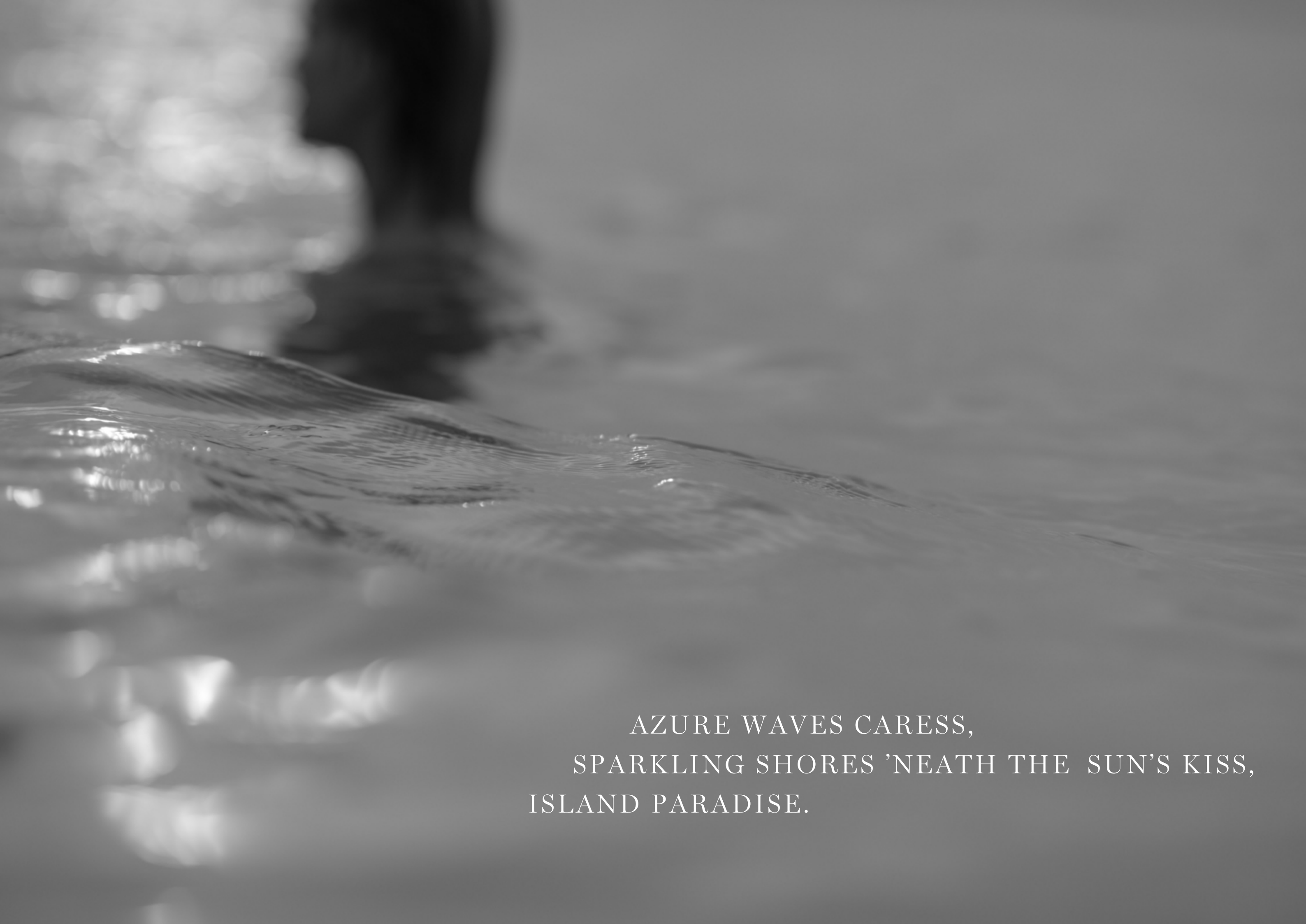
Stay

The resort features 14 private overwater and island villas, including lagoon villas, accessible by boat, and the Maldives' first floating villa. Each has its own private access to the pristine lagoon or white sand beach. Designed to offer the ultimate in Soneva hospitality and exemplary service standards, each villa features a dedicated team of three, which includes a Barefoot Guardian, Barefoot Assistant and chef, to ensure every stay is wholly personalised to not only meet guests' needs but also exceed all expectations.









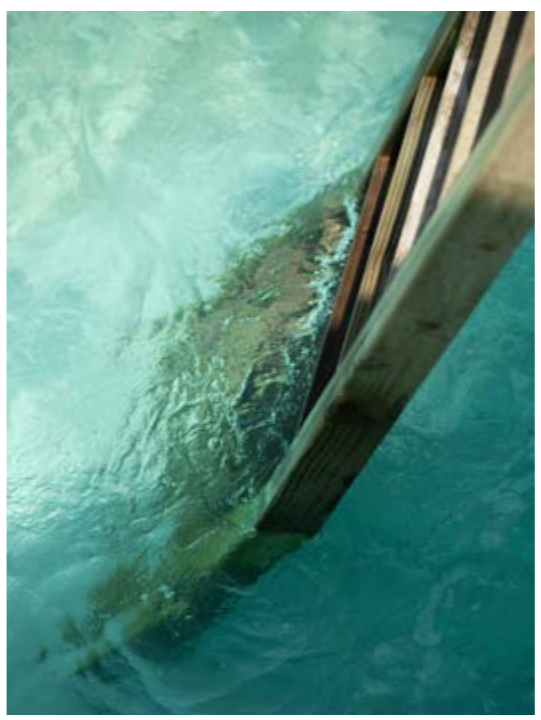
AZURE WAVES CARESS,
SPARKLING SHORES 'NEATH THE SUN'S KISS,
ISLAND PARADISE.

Services & Amenities

Soneva Secret villas are designed to offer exceptional levels of privacy, comfort and peace, and are equipped with an array of services and amenities that include:

- Dedicated Barefoot Guardians and Barefoot Assistants in every villa
- Fourteen private chefs de partie across a range of international cuisines, one for each villa
- Direct beach or ocean access with daybeds and sun loungers
- Spa treatment rooms
- Private pools and curved water slides
- Master bedrooms with retractable roofs
- Open-air ensuite bathrooms with sunken bathtubs, toilets and showers
- Adjoining bedroom in every villa, perfect for children
- In-villa and beach dining areas
- Study desk with ocean views
- Fully equipped gyms
- Walk-in minibars with Smeg fridges, Nespresso coffee machines and in-villa kitchens and wine fridges
- TV lounges with large daybeds, smart TVs and Bose sound systems
- WiFi with on/off switches







So
Secret







AN INDIAN OCEAN GEM,
HIDDEN, TRANQUIL, SECRET ISLE,
NATURE'S TREASURE CHEST.



RESORT

Resort Map



RESORT FEATURES

EXPERIENCES

- | | | |
|---|--|------------------------|
| A THE LIVING ROOM
- LIBRARY
- GAMES ROOM
- BOUTIQUE | E WATER SPORTS | J YOGA PLATFORM |
| B THE GYM | F THE DEN | K ZIPLINE |
| C MARINE BIOLOGY
& DIVE CENTRE | G CINEMA PARADISO | L WELCOME JETTY |
| D THE SPA | H ORGANIC GARDEN | |
| | I SO PRIVATE - FLOATING
LOUNGE & KITCHEN
<i>Flexible location based on
guest's preference</i> | |

DINING DESTINATIONS

- | |
|---|
| a THE LIVING ROOM
- ALL-DAY DINING
- BAR
- CHEESE & MEAT ROOM
- CHOCOLATE & ICE CREAM ROOM |
| b SO PRIMITIVE |
| c OUT OF THIS WORLD
- DINING ROOM
- WINE CELLAR
- OBSERVATORY |

- Overwater Hideaway
- Beach Hideaway
- Beach Reserve
- Crusoe Villa
- Crusoe Reserve
- Castaway Villa
*Flexible location based on
guest's preference*



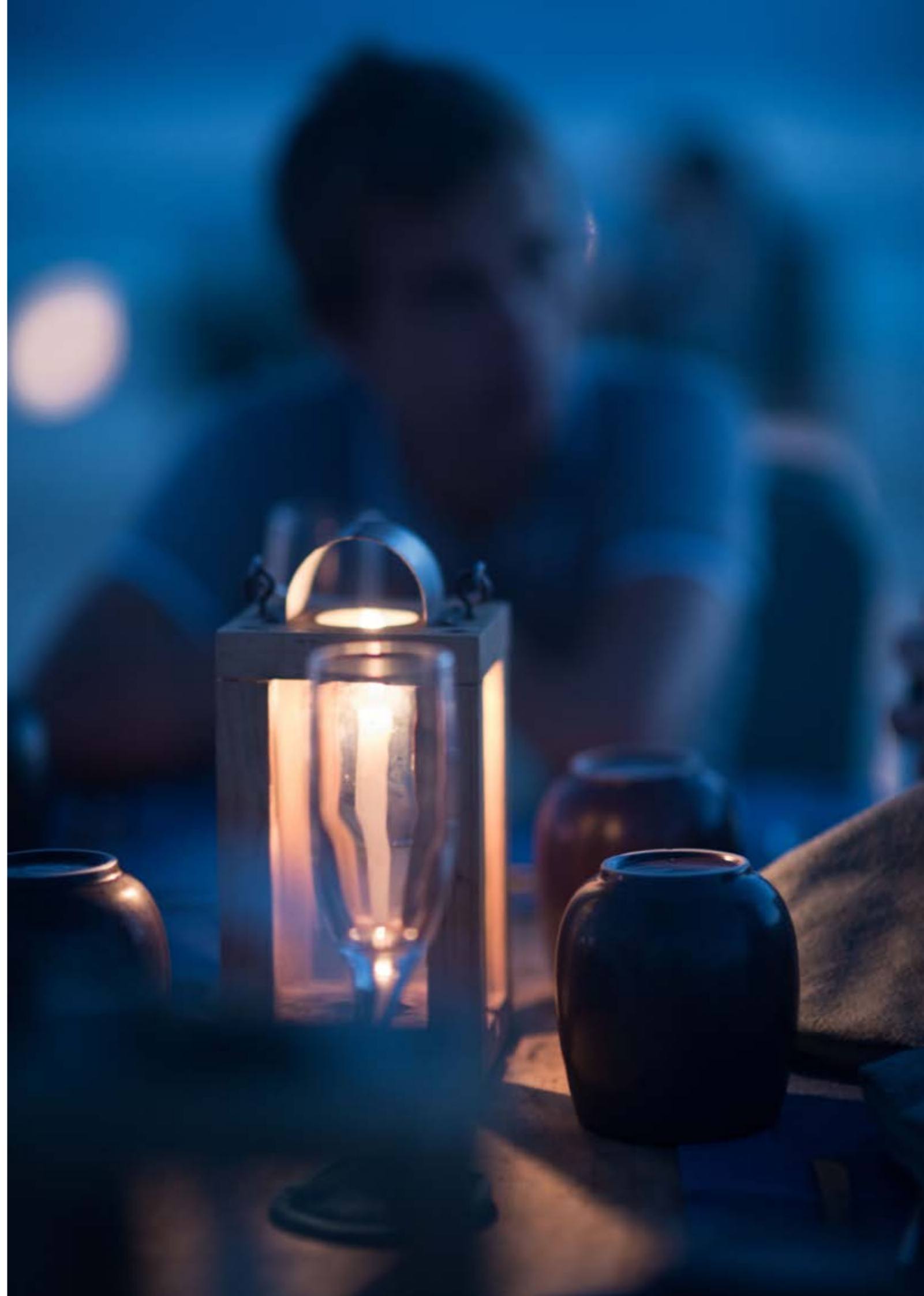
VILLA TYPE	QTY	TOTAL AREA (SQM)	RATE BASED ON	MAX. OCCUPANCY	VILLA	WATER SLIDE	RETRACTABLE ROOF	CHILDREN'S BEDROOM	PRIVATE KITCHEN	FITNESS ROOM	UPPER FLOOR OUTDOOR TERRACE	PRIVATE POOL WITH CATAMARAN NETS	POOL WATER F=FRESH S=SALT	OPEN AIR BATHROOM	LIVING ROOM	WALK-IN MINI-BAR	SPA TREATMENT ROOM
BEACH HIDEAWAY	5	448	2 pax	2A + 2C or 3A	Island Villa		●	●	●	●	●	●	F	●	●	●	●
CRUSOE VILLA	1	461	2 pax	2A + 2C or 3A	Lagoon Villa	●	●	●	●	●	●	●	F	●	●	●	●
OVERWATER HIDEAWAY	5	461	2 pax	2A + 2C or 3A	Lagoon Villa	●	●	●	●	●	●	●	F	●	●	●	●
CASTAWAY VILLA	1	461	2 pax	2A + 2C or 3A	Lagoon Villa	●	●	●	●	●	●	●	S	●	●	●	●
CRUSOE RESERVE	1	1108	4 pax	4A + 4C or 6A	Lagoon Villa	●	●	●	●	●	●	●	F	●	●	●	●
BEACH RESERVE	1	1158	4 pax	4A + 4C or 6A	Island Villa		●	●	●	●	●	●	F	●	●	●	●

Total 14 Villas



Dining

Every villa at Soneva Secret has its own dedicated chef, presenting a culinary experience like no other. The resort's 14 chefs de partie each come from a different country, with expertise in their local cuisine, to present an indulgent, bespoke menu of Japanese, Thai, Vietnamese, Maldivian, Italian, Indonesian, Mediterranean, South American, Sri Lankan, Chinese, Middle Eastern, Indian and Nordic flavours. Guests can also give in to temptation at the resort's complimentary chocolate, ice cream and cheese and charcuterie rooms.





So

Primitive



Out of This World

Gaze towards the heavens at our castaway wine cellar, dining room and observatory. Zipline to the elevated terrace to take your seat under the stars and dine on an expertly crafted menu, while our resident astronomer helps navigate the skies.

The Living Room

Home to a casual dining restaurant and lounge, library, games room and boutique, this two-storey club house is the heart of the resort and celebrates fresh, seasonal ingredients from the island's organic garden. Elevated for prime views, and just steps from the beach, delve into more flavours with dedicated ice cream, chocolate and cheese and charcuterie rooms.

So Primitive

This toes-in-the-sand dining experience takes cuisine back to its roots, with meat, seafood and plant-based dishes cooked over a central fire pit, inviting convivial gatherings.

Ever Soneva So Good

Indulge in a tantalising array of complimentary chocolates, truffles, pralines and more, all handmade by our artisan chocolatiers. Or discover a wide selection of rotating flavours of homemade ice creams and sorbets. Try the classics or get adventurous with exotic and unusual flavour combinations. Healthy yet utterly indulgent, most choices are free from refined sugar, dairy and gluten.

Cheese & Meat Room

Choose from an extensive, complimentary selection of gourmet cold cuts, cheeses and preserves – ideal for a pre-dinner tasting session and wine pairings.

A dark, moody photograph of a tropical beach at night. The scene is illuminated by warm, golden lights from buildings and street lamps, creating a contrast with the deep blue and black tones of the night sky and sea. Palm trees are visible in the foreground, their fronds silhouetted against the light. The overall atmosphere is mysterious and romantic.

HIDDEN IN THE SEA,
TROPICAL SECRETS AWAIT,
ISLAND'S LUSH EMBRACE.



Experiences

Magical experiences are designed to create lasting memories, and Soneva Secret's offerings are perfectly personalised to your preferences. From swimming with manta rays or castaway picnics, to stargazing at the observatory and yachting adventures, our island is your playground.

SONEVA SECRET



A group of manta rays swimming in deep blue water. The rays are seen from above, showing their dark, flat bodies and long, thin tails. They are moving in various directions, creating a sense of graceful movement. The water is a deep, uniform blue, and the lighting is soft, highlighting the texture of the rays' skin and the shape of their pectoral fins.

HIDDEN MALDIVIAN
GEMS IN OCEAN'S LOVING EMBRACE,
SECRET BEAUTY THRIVES.

Astronomical Dinner Cruise

Head out onto the Indian Ocean for a unique dining experience under the stars. Enjoy dinner and drinks while watching the sun set, before learning the secrets of the sky from our resident astronomer.

Swimming with Manta Rays & Turtles

Swim and snorkel in various bays around the island, which are home to majestic manta rays and turtles. There are several locations to explore, so itineraries may vary.

Please note that sightings are frequent but not guaranteed.

Sonu's Picnic

Take your castaway experience to another level and try Sonu's favourite – lunch on a deserted island prepared by your own personal chef. Dip yourself in the crystal-clear blue sea with our snorkelling guide while your chef prepares gourmet temptations in the most romantic of settings.

Sunset Dolphin Cruise

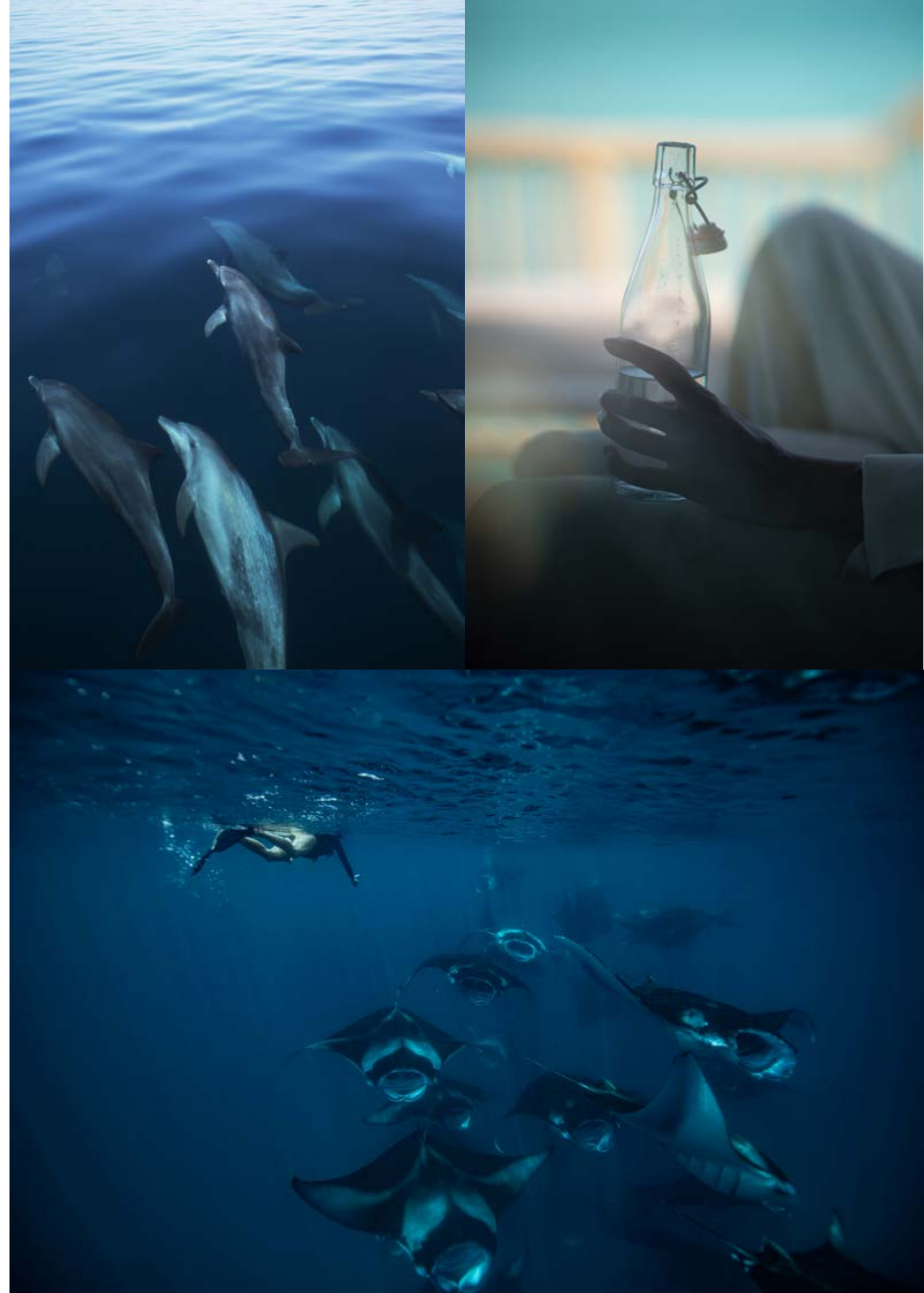
A truly captivating experience, watch dozens of playful dolphins under the Maldives' endless blues skies. As you cruise into deeper waters, you will be served snacks and light refreshments.

So Private

Take your island experience to another level and dine on a floating kitchen platform out at sea, prepared by your own personal chef. Dip in the crystal-clear blue sea and explore our house reef, while your chef prepares a selection of sumptuous dishes.

Castaway Picnic

Let us whisk you away our private sandbank for a true castaway experience. Hop aboard our boat and sail to the island with your picnic basket, snorkelling gear, sunbeds and umbrella. Once set up, they will leave you to enjoy the pure tranquillity of the castaway life.





Soneva in Aqua

An exceptional 23-metre, two-berth yacht, Soneva in Aqua sets sail across the Maldives with a Barefoot Guardian, personal chef and a wellness and yoga expert on board. Itineraries are bespoke and designed to explore the wonders of the Indian Ocean.



The Spa

Our integrative wellness concept unites thousands of years of ancient wisdom with the latest in science and innovation. Discover a curated selection of wellness services designed to help you relax, rejuvenate and rebalance in our serene treatment room or in the private in-villa treatment room.

A close-up, profile view of a woman's face, looking upwards. The image is heavily stylized with a teal and blue color overlay, creating a dreamy, ethereal atmosphere. The woman's eyes are closed, and her expression is serene. The background is dark and out of focus, suggesting an outdoor setting with foliage.

So

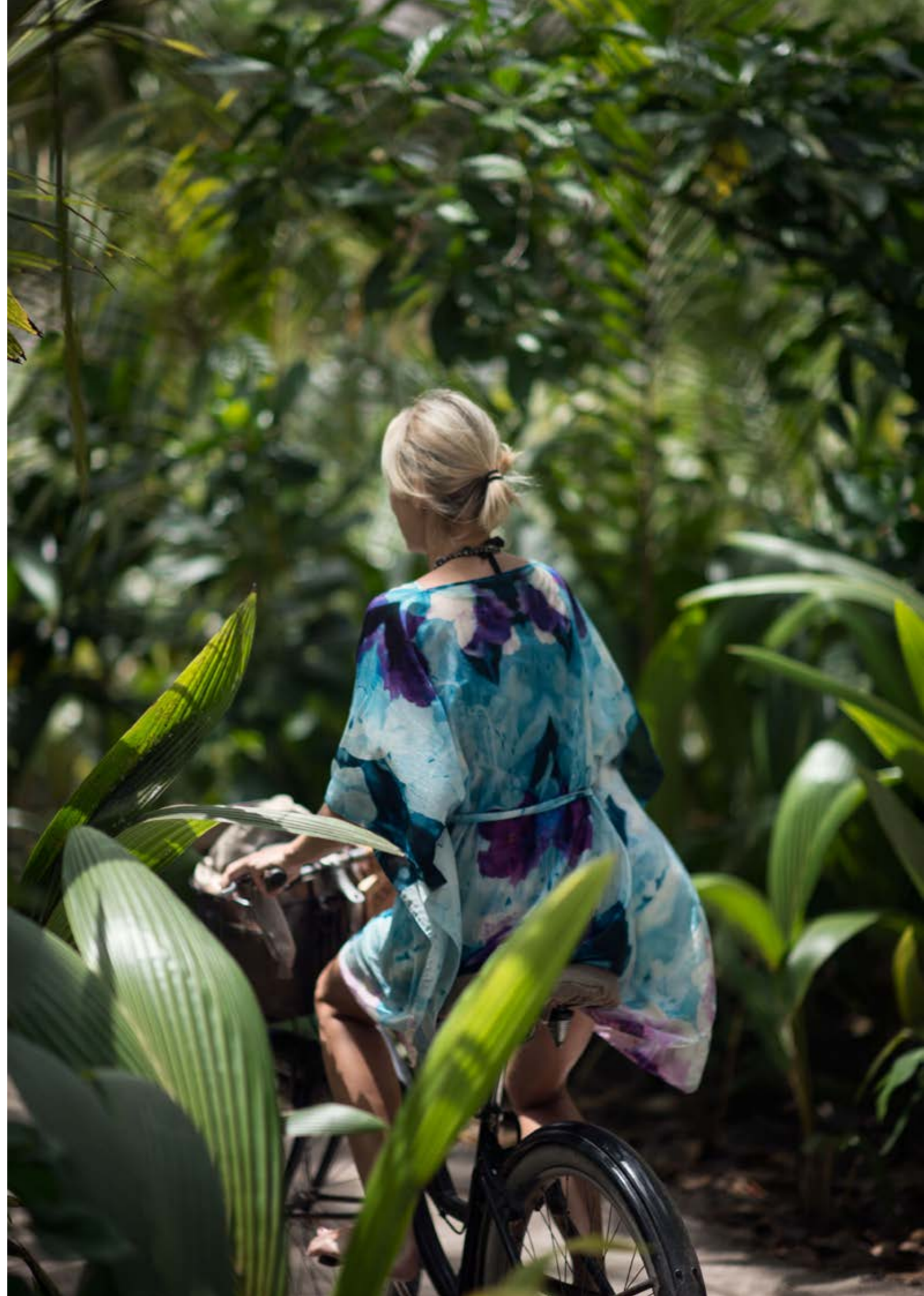
Delightful



Discover

Explore the pristine island home of Soneva Secret where winding paths and meandering trails invite discovery at every turn. Dive deeper into sustainable-first initiatives, make time for play or go beyond the Den for family time, surrounded by nature.

SONEVA SECRET





Marine Biology & Dive Centre

With many spectacular dive sites rich with marine life near the resort and in-house PADI instructors, Soneva Secret 2024 is the perfect destination to explore the awe-inspiring wonders of the ocean.

Out of This World

Equipped with a high-powered telescope, Out of This World's observatory offers views of magnificent galaxies and the opportunity to learn about the universe.

The Den

Discover one-of-a-kind children's activities for younger guests, or go beyond the Den for unforgettable family experiences that delve into the resort's exceptional natural setting.



So

Natural



Eco Centro

Soneva's dedicated 'Waste-to-Wealth' centre transforms used and discarded materials at the resort into recycled treasures.

Organic Garden

Located at the heart of the island, our organic gardens supply a variety of fresh vegetables, salads and herbs to the resort's kitchens and spa.

A large school of fish, likely sardines or anchovies, swimming in clear blue water. The fish are densely packed and moving in a coordinated pattern, creating a shimmering effect as they catch the light. The water is a deep, vibrant blue, and the overall scene is serene and natural.

SECRET ISLAND'S HEART,
NATURE'S CANVAS, WILD AND
PURE, LIFE'S SYMPHONY PLAYS.



So
Lovely

Sales Offices & Representatives

AUSTRALIA & NEW ZEALAND

T: +61 40598 7177
E: sales-australia@soneva.com

CENTRAL AND EASTERN EUROPE

T: +34 910 807 870
E: sales-spain@soneva.com

CHINA

T: +86 138 1002 9496
E: cdos-china@soneva.com

FRANCE, BELGIUM, LUXEMBOURG, MONACO, HUNGARY & CZECH REPUBLIC

T: +33 61 57 94 437
E: sales-france@soneva.com

INDIA

T: +91 95990 24246
E: sales-india@soneva.com

ITALY

T: +34 910 807 870
E: sales-italy@soneva.com

JAPAN

T: +81 (0) 90 3426 6506
E: yoshie@soneva.com

LATIN AMERICA

T: +55 11 99164 9415
E: sales-lam@soneva.com

MALE, SRI LANKA, SINGAPORE, INDONESIA, MALAYSIA

T: +960 7784280
E: aisha@soneva.com

MIDDLE EAST

T: +971 5037 0 8553
E: sales-gcc@soneva.com

NORTH AMERICA

T: +732 473 9982
E: sales-usa@soneva.com

RUSSIA & CIS REGION

T: +74 954 806 846
E: sales-russia@soneva.com

SOUTH AFRICA

T: +27 (0) 11 467 1424
E: sales-za@soneva.com

THAILAND

T: +66 (0) 2631 9698
E: sales@soneva.com

TURKEY & ISRAEL

T: +90 532 266 73 99
E: anet@soneva.com

UK, IRELAND, NORDIC & NETHERLANDS

T: 44 (0) 7590 217707
E: alan@soneva.com



145 nautical miles
75 minutes by seaplane

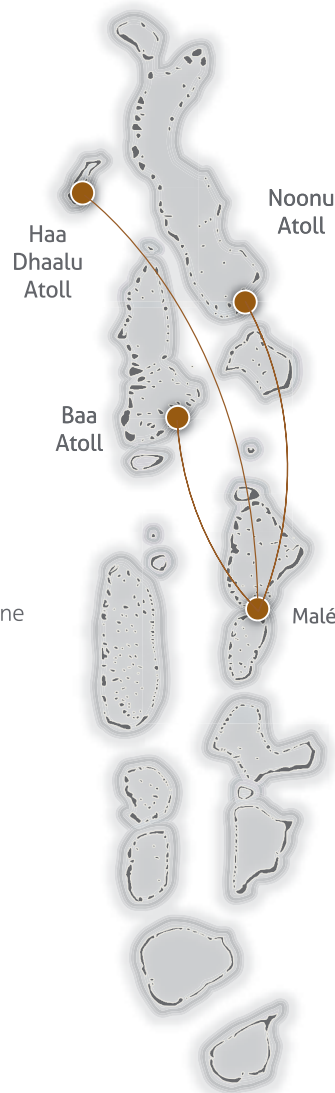


60 nautical miles
30 minutes by seaplane

Maldives



92 nautical miles
40 minutes by seaplane



Contact

Soneva Secret 2024

Reservations

E: reservations@soneva.com

T: +960 660 4300

UK Toll-Free Number: 0 800 048 8044

US Toll-Free Number: 183 3705 8298

China Toll-Free Number: 400 1209 100

Thailand Toll-Free Number: 180 001 2068

soneva.com

   @discoversoneva