



FACTSHEET





Jewel of the Oceans

Hanifaru Bay

Kihaa
Maldives

Your private coral island located in Baa Atoll, home of Hanifaru Bay - the famed marine protected biosphere reserve by UNESCO, featuring impeccably appointed Villas & Suites with breathtaking views of pristine waters gently caressing the white shore encircling the island.



SO MUCH TO EXPLORE...

- 124 Villa & Suites
- 3 Restaurants & 2 Bars
- Infinity Pool & Free Form Swimming Pool
- PADI Dive Center by Ocean Dimensions
- Water Sports Center
- Fully Equipped Gym
- Kihaa Spa
- Kids Club / Children's Playground
- Medical Clinic
- Floodlit Tennis Court
- Squash Court
- Souvenir Shop
- Jewelry Shop
- Rich house reef encircling the island
- White sandy beaches & a turquoise lagoon



YOUR FEET IN THE SAND IN ONLY 25 MINUTES!

Upon arrival to the airport, guests will be received by our airport representatives and escorted to the private lounge for their Maldivian flight departing from Velana International Airport. The resort can be reached by a 25 minute domestic flight to Dharavandhoo Airport followed by a 5 minute speedboat ride.



THERE IS MORE...

- Complimentary Wifi Internet
- Exclusive Islanders
- Excursions
- Daily Entertainment
- Photography Service
- Baby Sitting Service
- Laundry Service
- In Villa Dining Service
- Wedding Packages
- Honeymoon & Anniversary Celebrations
- Courier Service
- Airport Guest Relations

EXPERIENCES IN PARADISE!

- Hanifaru Bay Experience
- Horse Experience
- Sunset Cruise
- Turtle Quest
- Dolphin Watching
- Night Fishing
- Joali Time Local Village
- Big Game Fishing





CONTENTS

THE CLASSIC COLLECTION

THE LUXURY COLLECTION

THE KIHAA SIGNATURE RESIDENCE

KIHAA SPA

WATER SPORTS

DIVING & SNORKELING

WINE & DINE

QUICK OVERVIEW

KIHAA MAP

INTERACTIVE PDF



The Classic Collection



BEACH ACCESS VILLA

Roomy & comfortable, offering limited sea view, the Beach Access Villa hosts a private garden and a patio, steps away from the beach looking for reasonably priced accommodation.



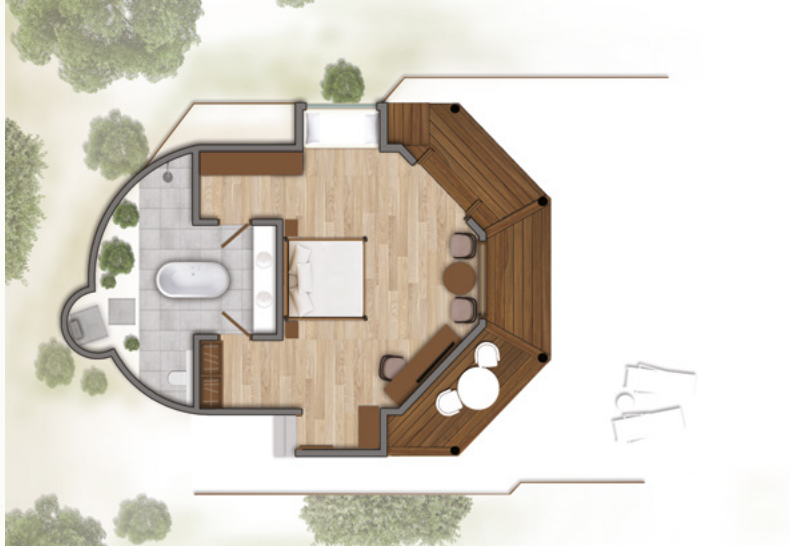
No. of Units
33



Covered Area
77m²



Location
Direct but limited
Sea View,
easy access to the
beach



BEACH VILLA

Set on the beachfront, the Beach Villa features an airy bedroom. A private outdoor pavilion is set right beside the room facing the beach, perfect to lounge with a book and for amazing views of the blue sky & glistening sea.



No. of Units
30



Covered Area
110m²



Location
Sea View,
direct access
to the beach



ISLAND VILLA WITH POOL

The Island Villa features a spacious bedroom, a day bed to lounge and a private pool overlooking the treetops in the garden.



No. of Units
06



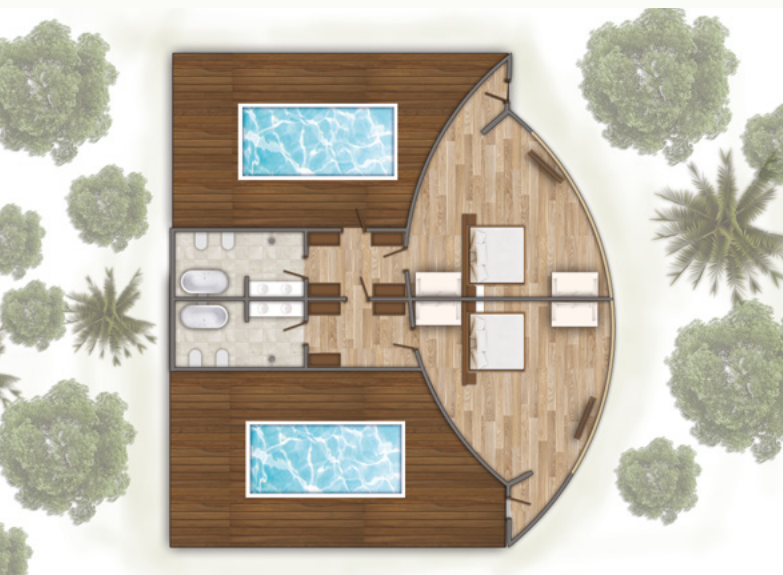
Covered Area
75m²



Location
Garden
View



Pool Size
8m²



The Luxury Collection





BEACH VILLA WITH PRIVATE POOL

Comprising a spacious bedroom & few steps away from the beach, this Beach Villa hosts a private pool surrounded by vegetation in the serene atmosphere of your outdoor extended bathroom. A patio equipped with sun loungers faces the beach.



No. of Units
10



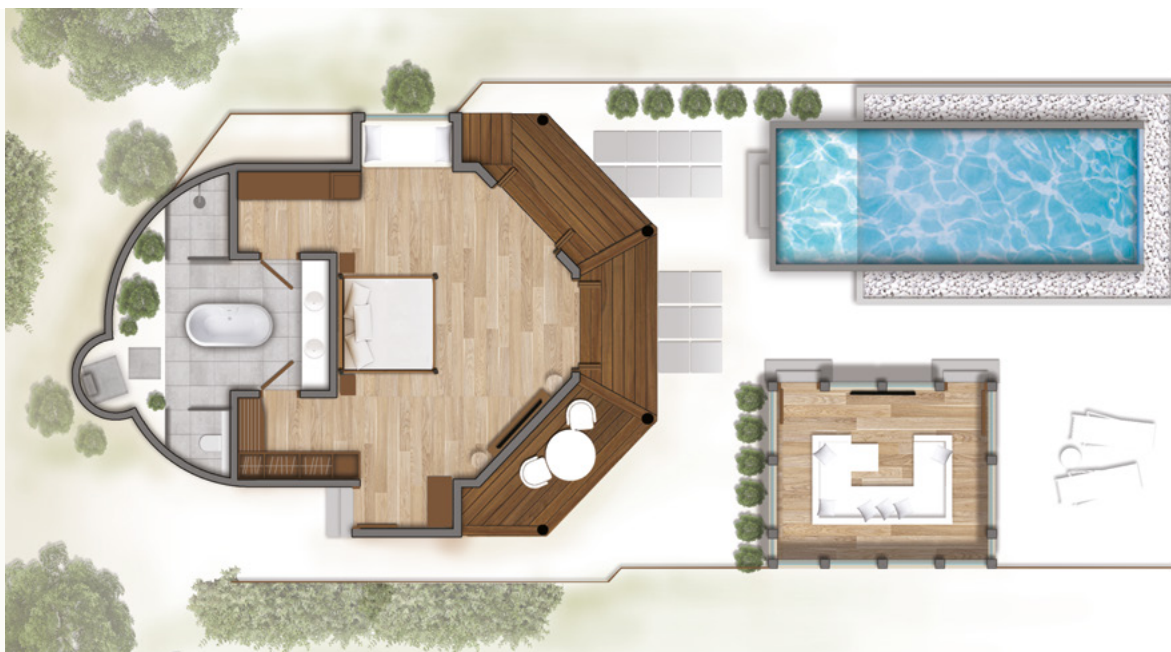
Covered Area
130m²



Location
Direct but limited
sea view, featuring
private pool
in the garden



Pool Size
16m²



BEACH SUITE WITH INFINITY POOL

Stretched out in 150m² of luxurious space, the Beach Suite is ideal for guests seeking a quiet beach retreat with extra space, private pool & amazing views. Relax in your private haven with a view of white sandy beach greeting the turquoise lagoon. Lounge in the pop up living area or enjoy the in-villa pool on the beach.



No. of Units
10



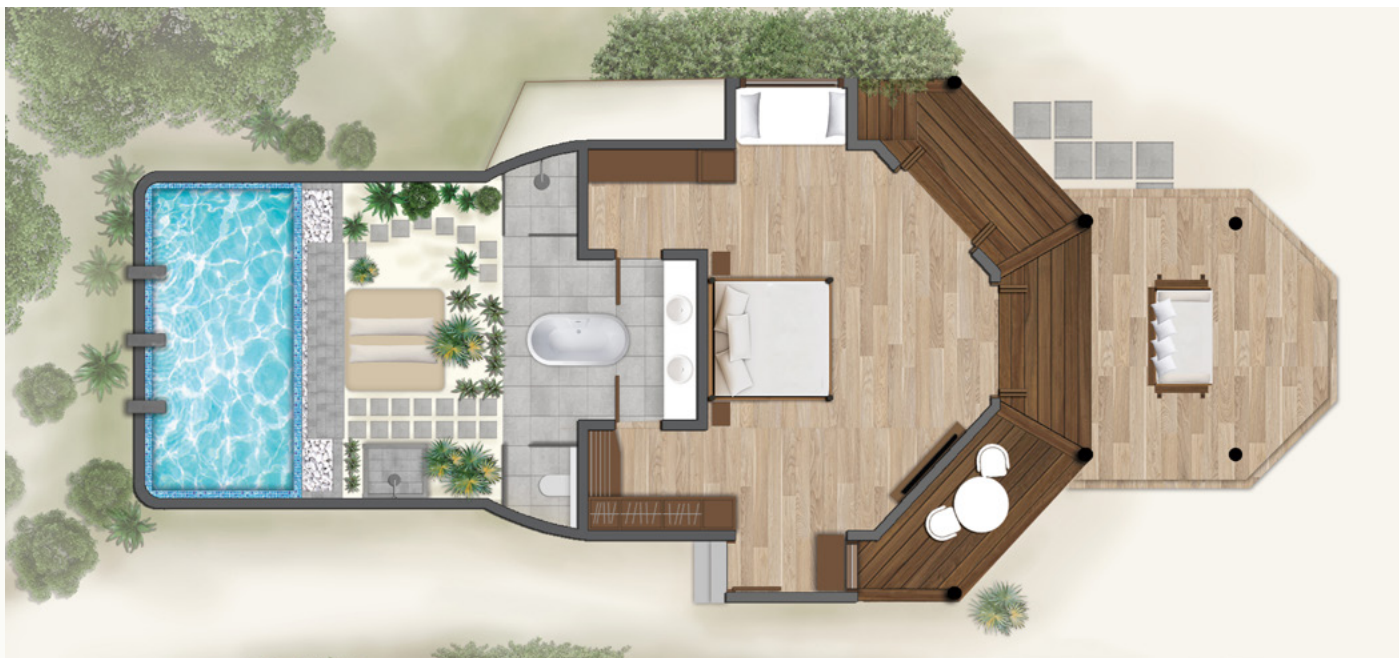
Covered Area
150m²



Location
Sea view featuring
private infinity pool
facing the beach



Pool Size
28m²



SUNSET BEACH VILLA WITH PRIVATE POOL

Comprising a spacious bedroom & few steps away from the beach, this Sunset Beach Villa with Private Pool hosts a private pool surrounded by vegetation in the serene atmosphere of your outdoor extended bathroom. A patio equipped with sun loungers faces the beach.



No. of Units
08



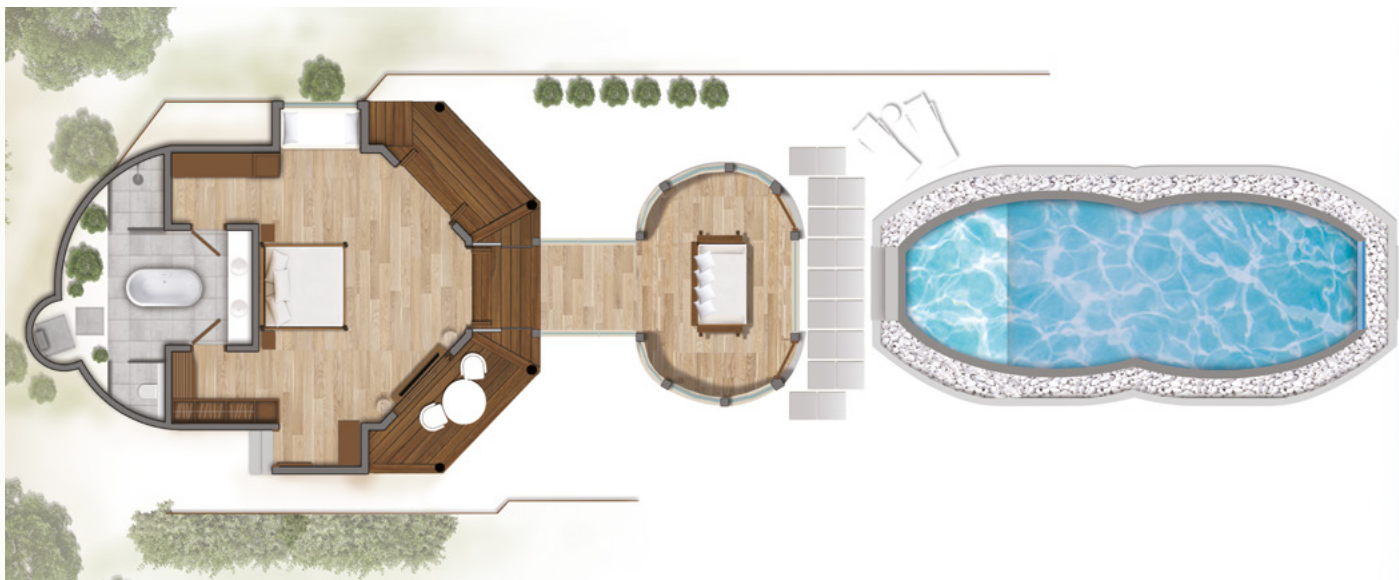
Covered Area
150m²



Location
Sea view featuring
private infinity pool
facing the beach



Pool Size
32m²



SUNSET BEACH SUITE WITH INFINITY POOL

Stretched out in 150m² of luxurious space, the Sunset Beach Suite with Infinity Pool is ideal for guests seeking a quiet beach retreat with extra space, infinity pool & amazing views. Relax in your private haven with a view of white sandy beach greeting the turquoise lagoon. Lounge in the pop up living area or enjoy the in-villa pool on the beach.



No. of Units
10



Covered Area
150m²



Location
Sea view featuring
private infinity pool
facing the beach



Pool Size
32m²



TWO BED OCEAN VIEW SUITE WITH INFINITY POOL

Luxury beachfront accommodation facing the lagoon with infinity pool, a haven for families or small groups of friends travelling together. A total expanse of 310m², this Ocean View Suite features a generous living room and two bedrooms. These Suites offer a spacious patio with a pavilion beside the pool. A picture-perfect retreat for a memorable holiday.



No. of Units
2



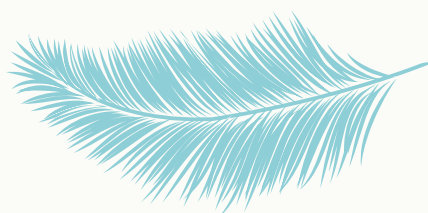
Covered Area
310m²

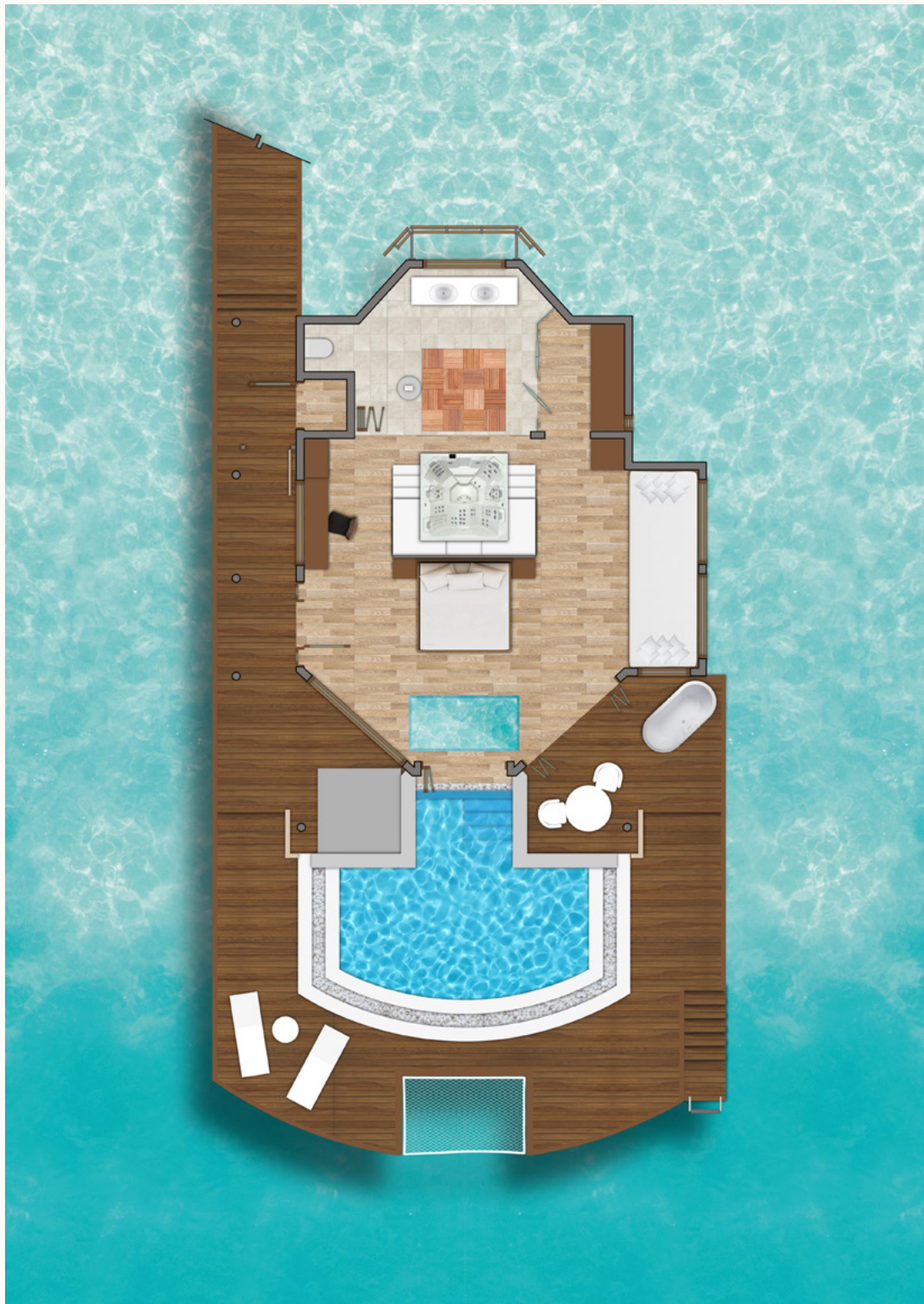


Location
Sea View,
featuring
private pool
facing the
beach




Pool Size
10m²







SUNSET OVERWATER VILLA WITH INFINITY POOL

Nestled on wooden stilts directly over the turquoise lagoon of the island, the Sunset Overwater Villa with Infinity Pool is perfect for total seclusion. The generously sized Villa hosts an infinity pool over looking the ocean as part of the experience. The Villa has direct access to the lagoon.


No. of Units
10


Covered Area
169m²


Location
Sea View
with direct
access to
the lagoon


Plunge Pool Size
18m²





THREE BEDROOM ROYAL BEACH SUITE WITH INFINITY POOL


Introducing the new 3 Bedroom Royal Suite to Kihaa, an unparalleled experience themed around two interconnected villas with their own two pools (infinity pool & private pool), allowing guests privacy and peace of mind while also providing the perfect setting for a family or group to enjoy togetherness in their own luxurious communal area.

The 3 Bedroom Royal Suites feature a wealth of additional extras that will guarantee your stay is a memorable one, with your own Undhoali (maldivian swing), dining area, private grill and garden, everything you could need is at your fingertips, while guests who are staying in the 3 bedroom royal suite also have access to their own covered pool at the back of the villa, perfect for a tranquil dip. While the suites themselves are majestic, we also provide a first class butler service to ensure that all of your needs are taken care of, from the moment you arrive to the moment you leave, allowing you to kick back and relax and enjoy everything our beautiful island has to offer throughout what is sure to be a trip of a lifetime.


No. of Units
1


Covered Area
765m²


Location
Sea view featuring an infinity pool facing the beach.


Pool Size
Infinity Pool: 80m²
Private Pool: 13m²

THE KIHAA

Signature Residence



Elegantly stylish, splendidly finished and indulgently luxurious is this sprawling extravagance of a ten bedroom private residence in Kihaa Maldives. Savour every step as you make your way around this heavenly retreat.

The ultimate residence for families and friends alike, Kihaa Signature Residence is designed as a “resort within a resort” to ensure maximum seclusion for every guest offering complete privacy and allowing you to enjoy all the luxuries of a five star hotel in a tropical paradise.

The ten bedroom residence combines peaceful architecture, innovative modern comforts, specialized Kihaa In-Villa amenities and extravagant luxuries to make guests feel at home while on holiday.



- 10 bedroom with living space, dining area & well equipped kitchen
- Luxury Yacht (68ft) for private use
- Private Infinity Pool (size: 100sqm)
- Outdoor Jacuzzi (6 seater)
- 24 hour butler service
- Wifi in Residence
- Residence Library
- Residence Gym featuring Sauna & Steam room
- Kihaa Spa on the beach
- Residence private beach
- Canoe and Snorkeling gear
- Overwater Gazebo
- Buggy Service
- Billiard Table



ROOMS

- 10 bedrooms ensuite bathrooms (Max: 18 guests)
- Beautifully appointed 4 Master Suites, 2 Suites with Twin Bedding – great for children & 2 Loft Style Villas in the adjoining building – the proximity and contained feel of these two rooms is ideal for older children.
- 2 of the Grand Master Suites are identically designed and furnished but in two color tones. Set on ground floor which steps right onto the wooden deck by the pool. Perfect for the romantic couple.
- All rooms benefits from ensuite bathrooms with bathtubs.
- Rooms offer spectacular views of the beach.
- 2 Single rooms with attached toilets downstairs is best used as entourage accommodation.
- Kihaa In-Villa Amenities in all rooms.

DINING & LIVING AREAS

- An elegant and spacious living area with carefully curated beams features a snooker table, 72" TV & a luxurious sofa.
- Casual dine-in area with its marble top counters, tapas grill and barstools spills into the roomy sitting area.
- Fling open the large doors and bring the outside, in. Step outside onto the wooden deck, a gazebo is set up to serve all meals beside the pool.
- The kitchen is fully stocked by the resident chef for preparing sumptuous meals and snacks as well as ample fridge space for an evening's fizz, wine or beer.
- Through the main entrance, a floating staircase leads up to a more intimate and cozy living area on the first floor featuring a 50" television, perfect to host movies and playtime for children.



EXTRA FEATURES

- Private infinity pool set on the wooden deck. Step outside from the living room or walk out of the balcony for the amazing pool view.
- 68 ft Private Yacht for personal use. Inclusive of cruising for up to 2 hours a day. Best to cruise with the dolphins as sun rises.
- Jacuzzi perfect for six persons, sits beside the pool.
- Outdoor rain shower.
- Funky WC beside the pool, for quick access when on the beach.
- Sun loungers beside the pool & on the private beach.
- Private seating lounge on floating deck on the sea which offers panoramic views of the lagoon with direct access to an exotic coral garden.
- Pool toys, canoe and snorkeling gear.
- Fully equipped gym with state of the art equipment, also fitted a sauna & steam room.
- Private Dhoni complete with all necessary fishing gear for fun trips.

Kihaa Spa



Nestled on an over water chalet, Kihaa Spa is an invitation to relax and renew. Spa products and treatments have been designed to bring you time honored traditions of massages and healing rituals which were Awarded World Luxury Spa Awards in 2018 and MATATO Leading Wellness & Spa Resort Award in 2019. Featuring spacious treatment areas, opening up to the scents and calming sounds of the waves, Kihaa Spa promises a range of exotic spa therapies.

Kihaa Spa is perfect for the most luxurious spa getaway.

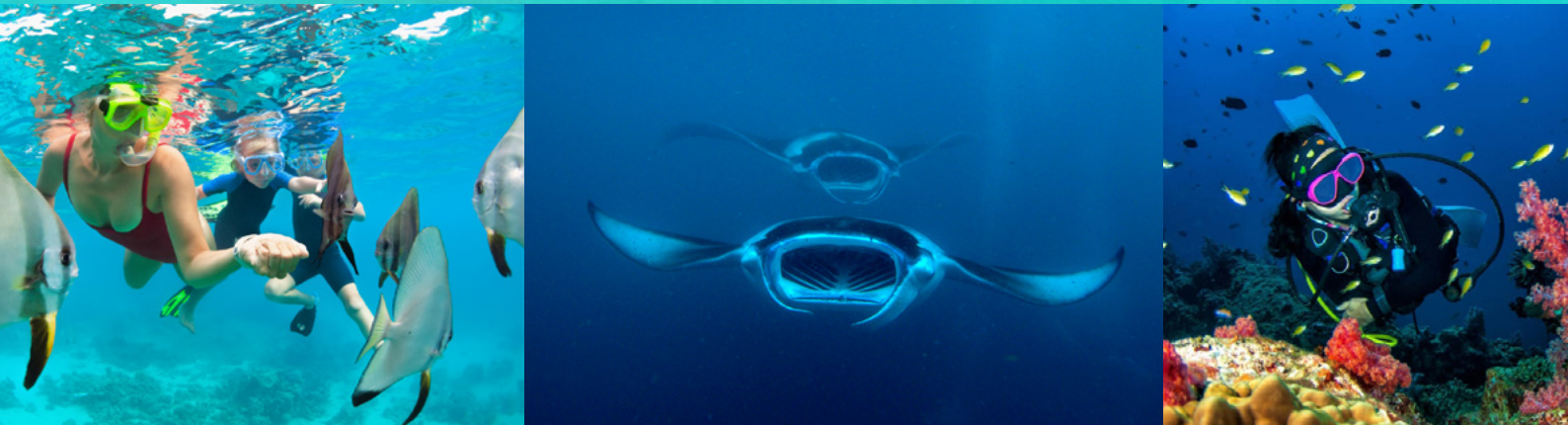
Water Sports



Our well experienced staff will make sure that your holidays here at Kihaa Maldives will be an unforgettable experience filled with long lasting colorful and fun memories of the sea.

Our range of watersports include Kayak, Windsurf, Stand up Paddle, Catamaran sailing, Wakeboarding, Water Ski, Fun Tubes, Jet Ski and many more.

Diving & Snorkeling



Diving and snorkeling in the Maldives is like no other place on Earth.

Located at the incredible Kihaa Maldives, our dive center offers a range of PADI certified courses and activities to allow novice and seasoned pros the chance to experience the wonders of the Indian Ocean. We provide the best training with lots of fun but without disregarding your safety.

Kihaa is at Baa Atoll, a UNESCO World Biosphere Reserve and also closest to Hanifaru Bay, a unique protected area that offers the chance to swim with manta rays and whale sharks as they come to the area to feed.

Wine & Dine

A taste of World's Cuisines



MALAAFAIY RESTAURANT

Translating to "presentation of a lavish banquet", it is the culinary heart of Kihaa featuring a wide selection of International and Local delicacies. An idyllic venue to enjoy gorgeous weather and spectacular views throughout the day.

Opening hours: 8:00 - 10:00 | 12:30 - 14:30 | 19:30 - 21:30

RAAVERIYA BAR

Lunch under the palm trees, sundowners by the lagoon, this is the perfect bar to enjoy & relax with little luxuries; Kihaa made signature icecream, light snacks, ice cold juices & colorful cocktails.

Opening hours: 10:00 - 00:00



UNDHOALI BAR

Adjacent to the infinity pool, a row of undhoali "swings" hangs beside the bar for a fun sway after a dip in the pool as you soak up the sun, and enjoy the beautiful island vibes. Happy hour starts with a soundtrack of chill music as you enjoy the sunset.

Opening hours: 10:00 - 00:00

THE LOFT

Kihaa Exclusive Wine Loft offers a sophisticated, relaxed atmosphere with the best service possible while providing an outstanding array of fine wines and a complementary menu of excellent food.

Opening hours: 10:00 - 22:00



SANGU À LA CARTE

This romantic venue of Sangu à la carte restaurant is a charming and intimate setup on the beach in moonlight, presenting a private dining experience to remember.

Service hours: 19:00 - 22:00

Dinner: 19:00 - 22:00

DHIRUM BAR

Malafaiy Restaurant's Bar

Breakfast: 8:00 - 10:00

Lunch: 12:30 - 14:30

Dinner: 19:30 - 21:30



Quick Overview

| | Beach Access Villa | Beach Villa | Island Villa with Pool | Beach Villa with Private Pool | Beach Suite with Infinity Pool | Sunset Beach Villa with Private Pool | Sunset Beach Suite with Infinity Pool | Two Bed Ocean View Suite with Infinity Pool | Sunset Overwater Villa with Infinity Pool | Two Bed Overwater Sunset Suite | Three Bedroom Royal Beach Suite with Infinity Pool & Private Pool |
|--|--------------------|-------------|------------------------|-------------------------------|--------------------------------|--------------------------------------|---------------------------------------|---|---|--------------------------------|---|
| No. of Villas | 38 | 39 | 6 | 10 | 10 | 10 | 10 | 2 | 10 | 2 | 1 |
| Maximum Occupancy | 3A/2A2C | 3A/2A2C | 3A/2A2C | 3A/2A2C | 3A/2A2C | 3A/2A2C | 3A/2A2C | 4A/4A2C | 4A/4A2C | 6A/6A2C | 7A/7A3C |
| Total Area (m²) | 77 | 110 | 75 | 130 | 150 | 130 | 150 | 310 | 169 | 270 | 765 |
| Indoor Shower | • | • | • | • | • | • | • | • | • | • | • |
| Outdoor Shower | • | • | • | • | • | • | • | • | | | • |
| Bath Tub | • | • | • | • | • | • | • | • | • | • | • |
| Jacuzzi | | | | • | • | • | • | | | • | • |
| Pool | | | • | • | • | • | • | | | | • |
| Plunge Pool | | | | | | | | | • | • | |
| Individually Controlled Air Conditioning | • | • | • | • | • | • | • | • | • | • | • |
| Ceiling Fan | | | • | • | • | • | • | | | | • |
| Mini Bar | • | • | • | • | • | • | • | • | • | • | • |
| Tea & Coffee making facilities | • | • | • | • | • | • | • | • | • | • | • |
| In-room Safe | • | • | • | • | • | • | • | • | • | • | • |
| HairDryer | • | • | • | • | • | • | • | • | • | • | • |
| Satellite TV | • | • | • | • | • | • | • | • | • | • | • |
| Internet (WiFi) | • | • | • | • | • | • | • | • | • | • | • |
| IDD Telephone | • | • | • | • | • | • | • | • | • | • | • |
| Toiletries | • | • | • | • | • | • | • | • | • | • | • |
| Slippers | • | • | • | • | • | • | • | • | • | • | • |
| Bathrobe | • | • | • | • | • | • | • | • | • | • | • |
| Day Bed | • | • | • | • | • | • | • | • | • | • | • |
| Beach Gazebo | | • | | • | • | • | • | • | | | • |
| Direct access to beach | • | • | | • | • | • | • | • | | | • |
| Veranda | • | • | • | • | • | • | • | • | • | • | • |
| Sun loungers | • | • | • | • | • | • | • | • | • | • | • |
| Baby Cribs | OR | OR | OR | OR | OR | OR | OR | OR | OR | OR | OR |
| Extra Bed | OR | OR | OR | OR | OR | OR | OR | OR | OR | OR | OR |
| Complimentary Water | • | • | • | • | • | • | • | • | • | • | • |
| Umbrella | • | • | • | • | • | • | • | • | • | • | • |
| Voltage | 220V/240V | 220V/240V | 220V/240V | 220V/240V | 220V/240V | 220V/240V | 220V/240V | 220V/240V | 220V/240V | 220V/240V | 220V/240V |



01 Arrival Jetty

02 Lounge

03 Reception

04 The Loft (Wine Cellar)

05 Pool

06 Undhoali Bar

07 Raaveriya Bar

08 Sangu A La Carte Restaurant

09 Moodhu Majaa (Watersports)

10 Diving Center

11 Steak Haws

12 Malafaiy (Main Restaurant)

13 Fitness

14 Tennis

15 Moodhu Lounge

16 Kihaa Spa

17 Kids Club

18 Clinic

19 Infinity Pool

20 Bonfire Ring

21 Mosque

22 Hanifaru Bay Manta Bar

23 Kihaa Club

24 Dhirum Bar

25 Hanifaru Jetty

A Beach Access Villa

B Beach Villa

C Island Villa with Pool

D Beach Villa with Private Pool

E Beach Suite with Infinity Pool

F Sunset Beach Villa with Private Pool

G Sunset Beach Suite with Infinity Pool

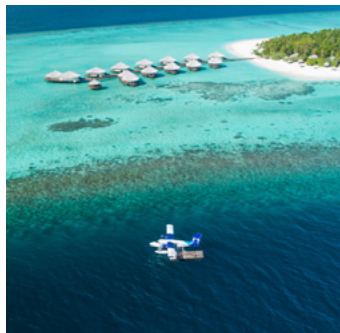
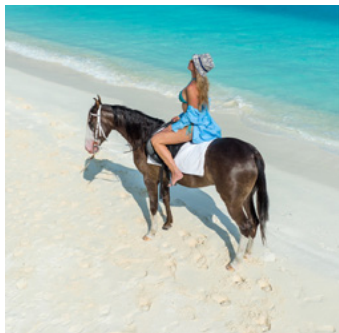
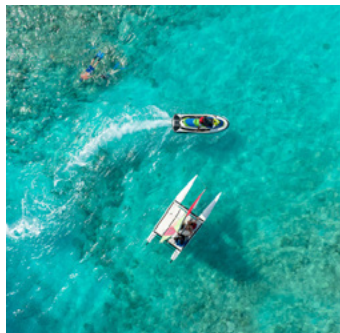
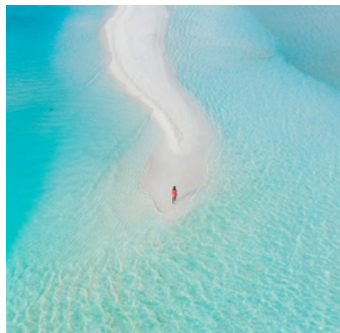
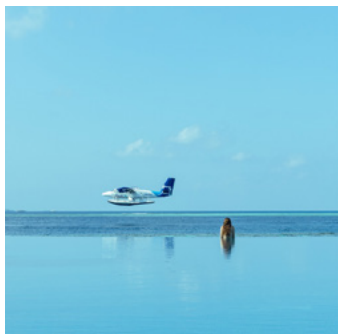
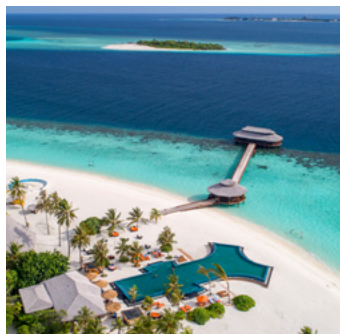
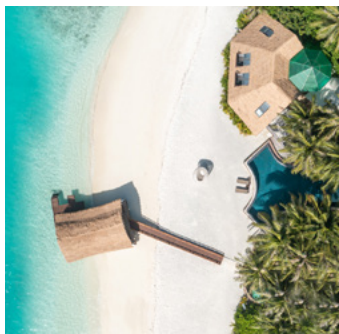
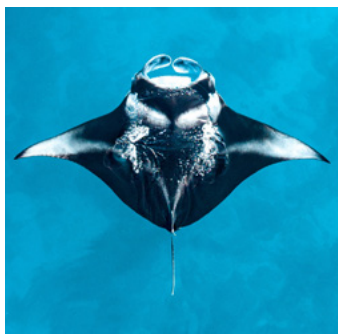
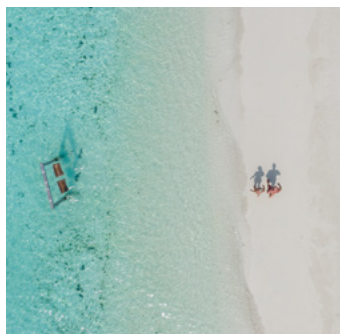
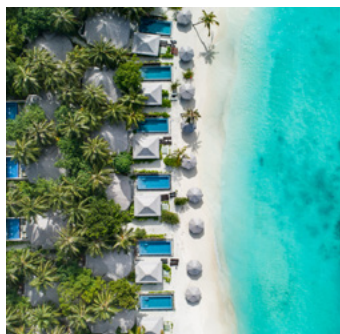
H Two Bed Ocean View Suite with Infinity Pool

I Sunset Overwater Villa with Infinity Pool

J Two Bed Overwater Sunset Suite

K Three Bedroom Royal Beach Suite with Infinity Pool & Private Pool

L The Kihaa Signature Residence





JEWEL OF THE OCEANS

