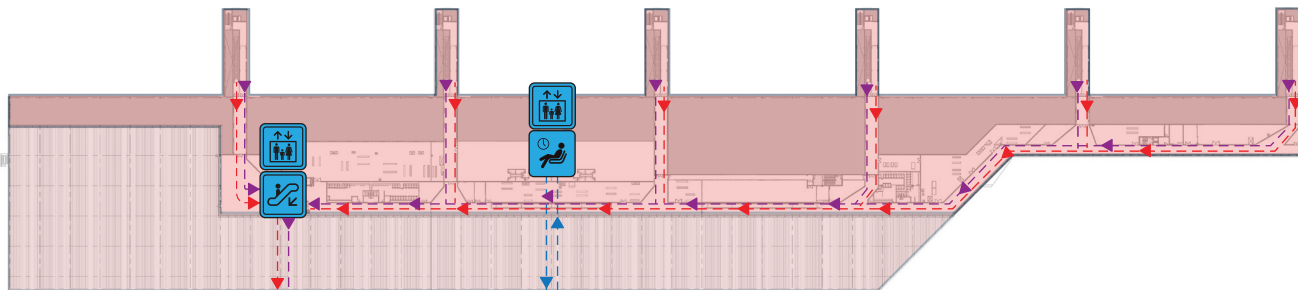
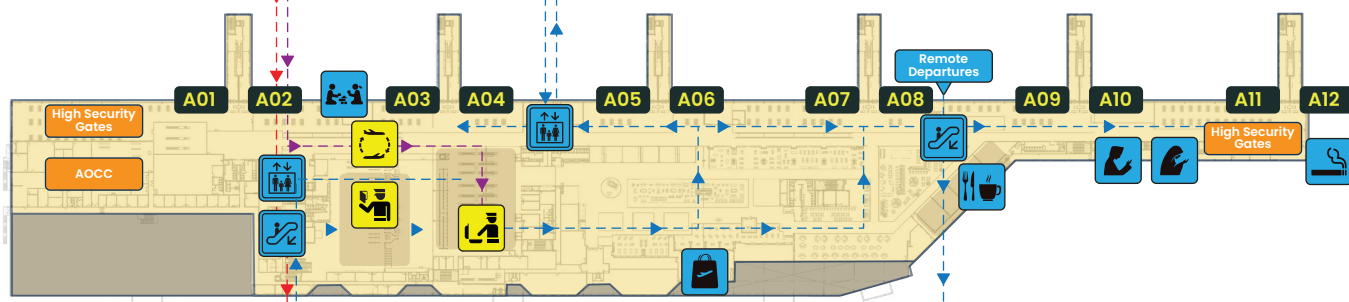


# Passenger Flow Chart

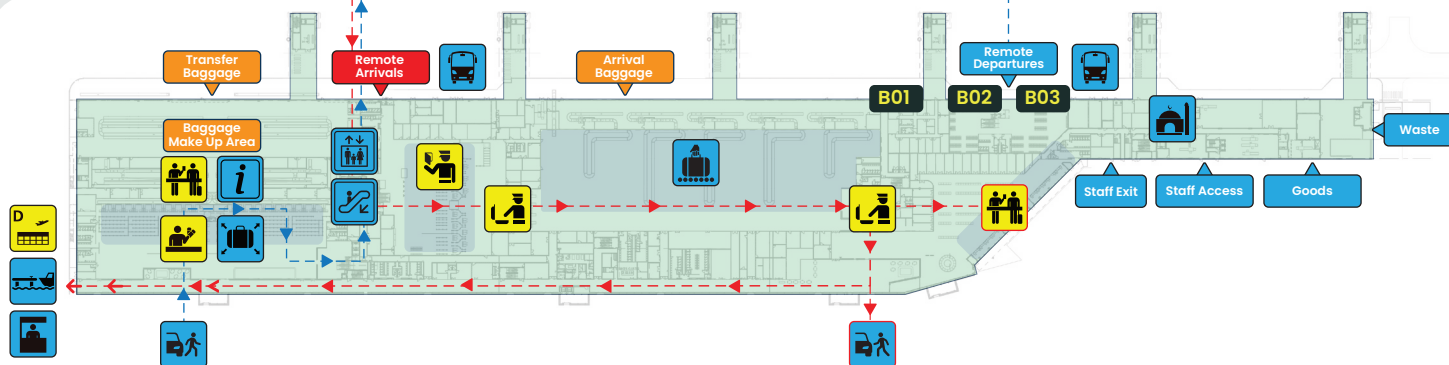
## 2 Second Level



## 1 First Level



## 0 Ground Level



## Pictogram Legend

|  |                    |  |                  |  |                |
|--|--------------------|--|------------------|--|----------------|
|  | Domestic Terminal  |  | Check-in         |  | Guest Counters |
|  | Seaplane Check-in  |  | Passport Control |  | Escalator      |
|  | Security/Customs   |  | Ticketing        |  | Drop-off       |
|  | Gates              |  | Transfer         |  | Prayer Room    |
|  | Information        |  | Baggage Claim    |  | Kids Play Room |
|  | Bus                |  | Duty Free        |  | Mosque         |
|  | Over-sized Baggage |  | Smoking Room     |  | Jetties        |
|  | Elevator           |  | Pick-up          |  | Prayer Room    |
|  | Eat & Drink        |  | Lounge           |  |                |

## Passengers to

— Departing — Transfer — Arriving

### Remote arrivals

- Passengers arriving on international flights connecting to another international flight enter terminal building at ground level and then ascend escalator or lift to first level where the transfer desk is located and proceed to Security and then to departure gates.
- Arriving passengers enter terminal on ground level and proceed to Immigration counters.

### PBB arrivals

- Arriving and Transfer passengers proceed to the arrival corridor
- Arriving passengers go down the escalator or lift to the ground level to Immigration.
- Transfer passengers go to the first level where the transfer desk is located and proceed to Security and to departure gates.